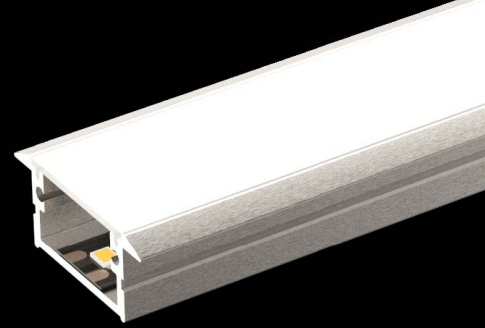


BELINI XL

Recessed profile with IP65 diffusor
Profil encastré avec diffuseur IP65

A39122

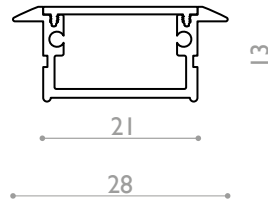


Puissance maxi Power max
24 w/m

Dimensions Dimensions
24 x 13 mm (24 x 15.8 mm with XX° optic)

Longueur maximale Max.length
3000 mm

Température d'utilisation Ambient temp.
- 10°C / + 40°C



A39122.C9.IP65.00.OP.DALI

Type of led

Pure CRI99	A4199
UltraCRI	A4101
Dynamic White	A4102
Regular	A4109
RGB	A4106
RGB+W	A4107
RGB+2W	A4117
High Efficacy	A4111
Ultra Efficacy	A4116

C99
CR
DW
C9
RGB
RGBW
RGB2W
HE
UE

IP Rating

IP20
IP54
IP65H

IP20
IP54
IP65

Finishes

Aluminium anodised silver
Aluminium anodised black

00
04

Cover & Optic

Opal
Frost
Opac grey

OP
FR
GR

Dimming

No dimming
Dali
Dmx
Dimming & to 10Vdc
Phase Dimming Digital

HF
DALI
DMX
D10
PHD



A39122.00



A39122.OP
Opal



A39122.ND
Night & Day



A39122.FR
Frost PC



A39122.ECP
Endcap



A39122.CLI
Clips



A39122.CSP
Ressort