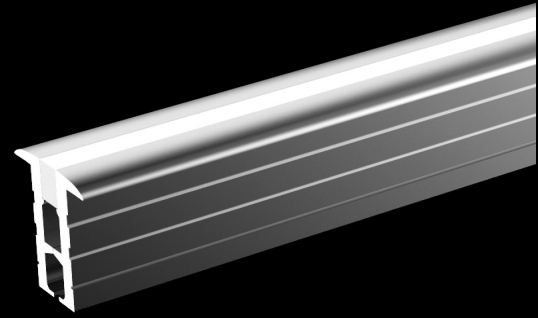


SINI T

Recessed narrow profile
Profil encastré étroit

A39126

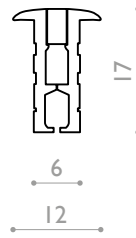


Puissance maxi Power max
20 w/m

Dimensions Dimensions
6 x 17 mm (cutout 7mm)

Longueur maximale Max.length
2000 mm

Température d'utilisation Ambient temp.
- 10°C / + 40°C



		A39126.SW.IP20.00.OP.DALI	
Type of led		SW	
Side View	A4114		
IP Rating		IP20	
IP20			
IP65H		IP65	
Finishes		00	
Aluminium anodised silver			
Aluminium anodised black		04	
Cover & Optic		OP	
Opal			
Dimming		HF	
No dimming			
Dali		DALI	
Dmx		DMX	
Dimming & to 10Vdc		D10	
Phase Dimming Digital		PHD	



A39126.LPED
Profilé



A39126.OPL
Diffusor opal

