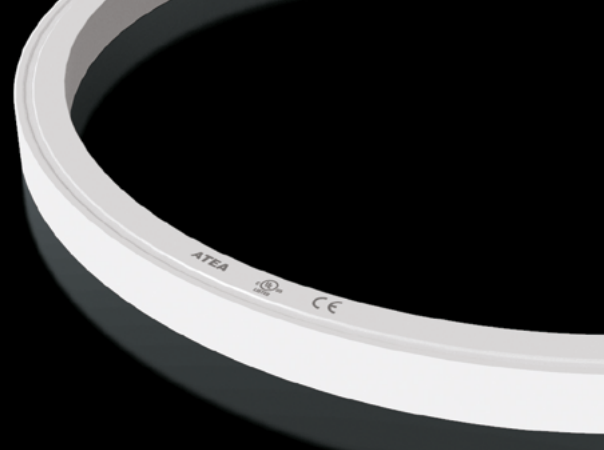


NEO TOP DISTANCE

Flexible Uniform LED light line, top bending, up to 50m
Ligne lumineuse LED opal flexible, jusqu'à 50m
A4114.1515D



Temperature de couleur **CCT**
2300K - 2700K - 3000K - 4000K

Precision de couleur & IRC **Color consistency & CRI**
OneBinOnly | 82/92+

Puissance lumineuse & Angle ouverture **Luminous output & Beam angle**
(@3200K) 800 lm (10w) | 250 lm (6w) & 110°

Puissance **Power**
10w/m | 6w/m

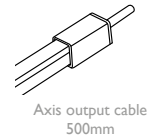
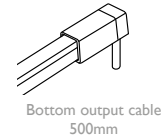
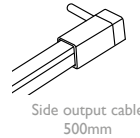
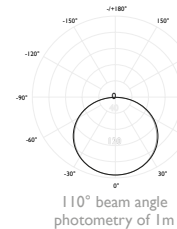
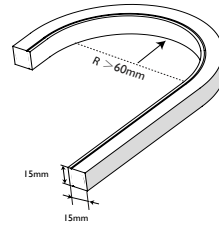
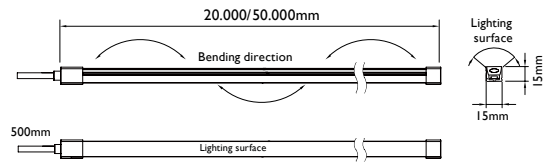
Coupe **Cutting pace**
100 mm

Dimensions & Rayon courbure mini **Dimensions & min. bending radius**
50000 x 15 x 15 mm (6w/m) | 20000 x 15 x 15 mm (10w/m) | > 60 mm

Indices de protection & normes **Standards**
IP67 - IK08 - LM80 - CE - UL Listed
Flame resistant - UV resistant - Solvent resistant - Saltwater resistant

Tension alimentation & Classe isolation **Input voltage & Class**
48 Vdc - class III

Température d'utilisation **Ambient temperature**
- 20°C / + 40°C



CCT & luminous flux

	10w/m-20m	6w/m-50m	
2300K	280 lm/m	210 lm/m	923
2700K	330 lm/m	240 lm/m	927
3000K	350 lm/m	250 lm/m	930
4000K	350 lm/m	250 lm/m	940

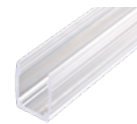
IP Rating
IP 67

IP67

Dimming
No dimming
Dali
Dmx
Dimming I to 10VDC
Phase dimming digital

HF
DALI
DMX
D10
PHA

A4114.1515D.930.IP67.DALI



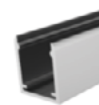
A4114.1515D.TRP
Plastic Rail
1000mm



A4114.1515D.CLP
Plastic Clip
25mm



A4114.1515D.ECP
End Cap Set



A4114.1515D.TRA
Aluminium Rail
1000mm



A4114.1515D.CLA
Aluminium Clip
25mm



A4114.1515D.MGT
Moldable groove
1000mm

ATEA

