

NEO TOP POOL

Flexible LED Light Line, top bend, suitable for underwater
Ligne LED flexible, adaptée à l'immersion
A4114.1515P



Temperature de couleur CCT
2300K - 2700K - 3000K - 4000K | DW 2300K/4000K
R / G / B / Y | RGB

Precision de couleur & IRC Color consistency & CRI
OneBinOnly | 92

Puissance lumineuse & Angle ouverture Luminous output & Beam angle
(@4000K) 430 lm (10w) & 110°

Puissance Power
10w/m (2300K/2700K/3000K/4000K/DW) | 8w/m (R/G/B/Y) | 12w/m (RGB)

Coupe Cutting pace
50mm (2300K/2700K/3000K/4000K/R/G/B/Y) | 62.5mm (DW) | 80mm (RGB)

Dimensions & Rayon courbure mini Dimensions & min. bending radius
(10m possible for W & R/G/B/Y) 5000 x 15 x 15 mm | > 60 mm

Indices de protection & normes Standards
IP68 - IK08 - LM80 - CE - UL Listed
Flame resistant - UV resistant - Solvent resistant - Saltwater resistant

Tension alimentation & Classe isolation Input voltage & Class
24 Vdc - class III

Température d'utilisation Ambient temperature
- 20°C / + 40°C



A4114.1515P.930.IP68.DALI

CCT & luminous flux

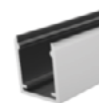
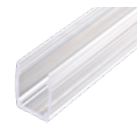
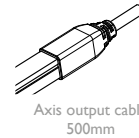
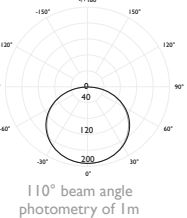
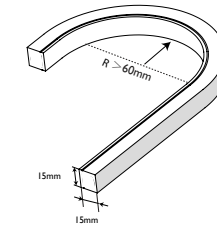
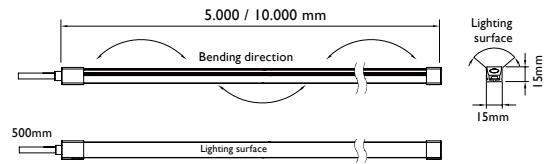
2300K	330 lm/m	923
2700K	400 lm/m	927
3000K	430 lm/m	930
4000K	430 lm/m	940

2300K-4000K 2x190 lm/m DW

Red	620/630 nm	R
Green	525/530 nm	G
Blue	465/470 nm	B
Yellow	587/592 nm	Y
RGB		RGB

IP Rating
IP 68 IP68

Dimming
No dimming HF
Dali DALI
Dmx DMX
Dimming I to 10VDC D10
Phase dimming digital PHA



ATEA

