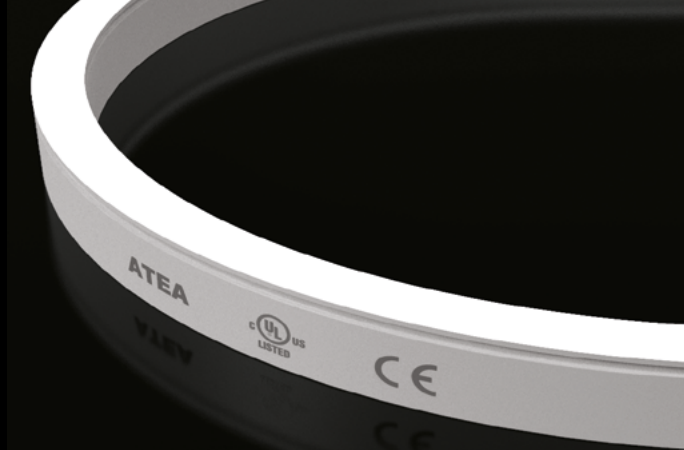


NEO SIDE DISTANCE

Flexible LED Light Line, side bend, 48V, 50m in one run
Ligne LED flexible latéralement, 48V, jusqu'à 50m
A4115.1217D



Temperature de couleur CCT
2300K | 2700K | 3000K | 4000K | DW 2300K/4000K | R/G/B | RGB | RGBW

Precision de couleur & IRC Color consistency & CRI
OneBinOnly | 82/92+

Puissance lumineuse & Angle ouverture Luminous output & Beam angle
(@4000K) 400 lm (10w/m) | 240 lm (6w/m) & 110°

Puissance Power
6w/m (2300K/2700K/3000K/4000K)
10w/m (2300K/2700K/3000K/4000K | DW | R/G/B | RGB | RGBW)

Coupe Cutting pace
100mm (2300K/2700K/3000K/4000K) | 62.5mm (DW)
100mm (R/G/B/Y & RGB) | 125mm (RGBW)

Dimensions & Rayon min. courbure Dimensions & min. bending radius
50000 x 12 x 17mm (6w/m) | 20000 x 12 x 17mm (10w/m) | >60mm

Indices de protection & normes Standards
IP67 | IK08 | LM80 | CE | UL Listed
Flame resistant - UV resistant - Solvent resistant - Saltwater resistant

Tension alimentation & Classe isolation Input voltage & Class
48Vdc | class III

Température d'utilisation Ambient temperature
- 20°C / + 40°C



A4115.1217D.930.IP67.DALI

CCT & luminous flux

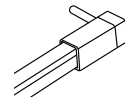
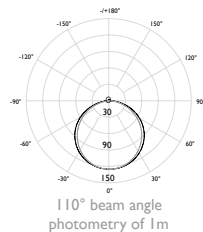
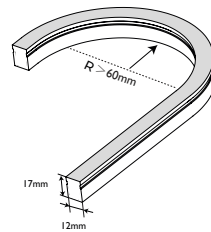
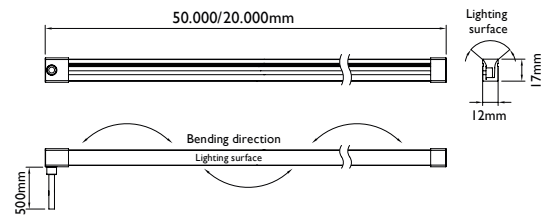
	6w/m-50m	10w/m-20m	
2300K	200 lm/m	340 lm/m	923
2700K	220 lm/m	380 lm/m	930
3000K	220 lm/m	380 lm/m	930
4000K	240 lm/m	400 lm/m	940

2300K/4000K 2x170 lm/m DW

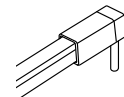
Red	620/630 nm	R
Green	525/530 nm	G
Blue	465/470 nm	B

RGB RGB

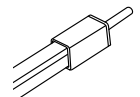
RGBW 2300K	RGB23
RGBW 2700K	RGB27
RGBW 3000K	RGB30
RGBW 4000K	RGB40
RGBX Pixel	RGBX



Side output cable 500mm



Bottom output cable 500mm



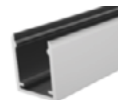
Axis output cable 500mm



A4115.1217D.TRP Plastic Rail 1000mm



A4115.1217D.CLP Plastic Clip 25mm



A4115.1217D.TRA Aluminium Rail 1000mm



A4115.1217D.CLA Aluminium Clip 25mm



A4115.1217D.ECP End Cap Set



A4115.1217D.TRH Aluminium Rail High 1000mm



A4114.1217D.CLH Aluminium Clip High 25mm



A4114.1217D.MGS Moldable groove 1000mm

ATEA

