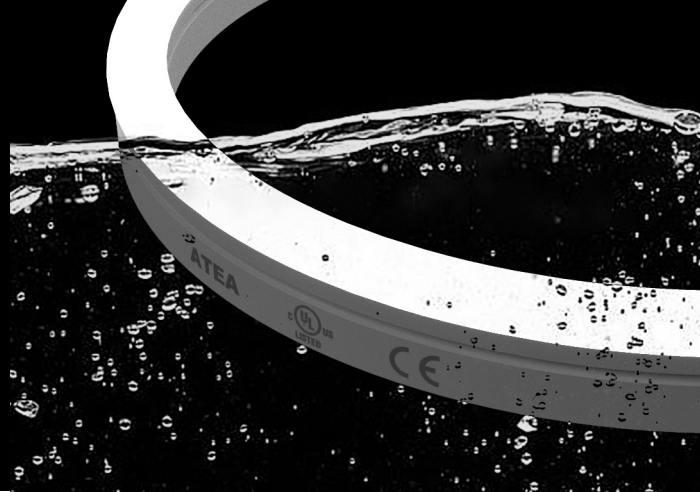


# NEO SIDE POOL

Flexible LED Light Line, side bend, suitable for underwater  
Ligne LED flexible latéralement, adaptée à l'immersion  
A41 I5.1224P



**Temperature de couleur CCT**  
2300K - 2700K - 3200K - 4200K - 5000K  
R / G / B / Y | RGB

**Precision de couleur & IRC Color consistency & CRI**  
OneBinOnly | 82 / 92+

**Puissance lumineuse & Angle ouverture Luminous output & Beam angle**  
(@4200K) 520 lm & 140°

**Puissance Power**  
10w/m (2300K/2700K/3200K/4200K/5000K)  
8w/m (R/G/B/Y) | 12w/m (RGB)

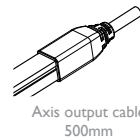
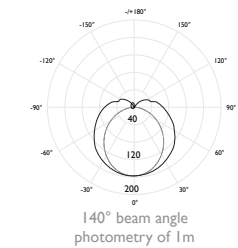
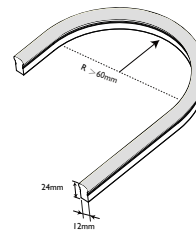
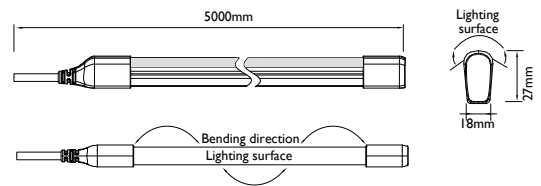
**Coupe Cutting pace**  
50mm (2300K/2700K/3200K/4200K/5000K | R/G/B/Y) | 83mm (RGB)

**Dimensions & Rayon courbure mini Dimensions & min. bending radius**  
(10 m possible for W & R/G/B/Y) | 5000 x 12 x 24 mm | > 60 mm

**Indices de protection & norme Standards**  
IP68 | IK08 | LM80 | CE | UL Listed  
Flame resistant - UV resistant - Solvent resistant - Saltwater resistant

**Tension alimentation & Classe isolation Input voltage & Class**  
24Vdc | class III

**Température d'utilisation Ambient temperature**  
- 20°C / + 40°C



A41 I5.1224.932.IP68.DALI

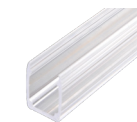
**CCT & luminous flux**

2300K	510 lm/m	823/923
2700K	520 lm/m	827/927
3200K	520 lm/m	832/932
4200K	520 lm/m	842/942
5000K	490 lm/m	850/950

Red	620/630 nm	R
Green	525/530 nm	G
Blue	465/470 nm	B
Yellow	587/592 nm	Y
RGB		RGB

**IP Rating**  
IP68 IP68

**Dimming**  
No dimming HF  
Dali DALI  
Dmx DMX  
Dimming I to 10VDC D10  
Phase dimming digital PHA



# ATEA



LÉGENDE - LÉGENDE