

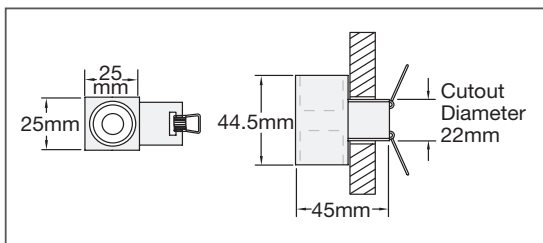


Lotus Bar, Manchester, UK. Lighting Design: Roberta Fulford

A compact, dual source LED interior wallwash luminaire measuring just 45mm tall

- Double Minicubeus is minimal in size yet creates an intense, decorative lit effect
- All LEDs are dual binned within a 2 step MacAdam ellipse to ensure colour consistency
- A range of optics is available to suit every application
- CNC machined to aerospace tolerances (1/1000mm)
- Choice of colour finishes available
- Fixing kit for solid walls available
- IP20 / IP44

Technical diagram



Weight: 65g

Suitable temperature range: -10°C to 40°C



Tel: + 44 (0) 845 862 6400 | Email: sales@acdcighting.co.uk

Double Minicubeus				
LED Type	Cree			
LED Quantity	2			
Drive Current	350			
Power Consumption. Including 85% efficient driver	2.5			
PFC	Driver dependant (typical 0.9)			
Colour Temp	2700°K	3000°K	4200°K	6000°K
Initial Colour Accuracy	2 Step MacAdam Ellipse			
Colour Stability Over Life. Measured at 6000hrs	2 Step MacAdam Ellipse			
CRI	85.0	85.0	80.0	80.0
Initial Lamp Lumen Output	130	146	157	174
Initial Lamp Lumens per Circuit Watt	52.0	58.4	62.8	69.5
Lamp Lumen Output including Thermal & Optical Losses	110	124	133	148
Lamp Lumens (including Thermal & Optical Losses) per Circuit Watt	44.1	49.6	53.3	59.0
Lifetime L70. Based on TM-21	50,000 hours			
Lumen Depreciation LIF Cat/Codes for % depreciation at 10,000hrs	Cat1/Code9			

acdc data taken from independent lab results. Output data figures stated are typical values. For information on airspace requirements for each luminaire, please see the installation specifications available on acdcighting.co.uk

Part Code > Double Minicubeus

Double Minicubeus, Anodised Aluminium Silver, 3000K, 12°, 3000K, 12°, IP44 **acdc1039/AAS/30/12R/30/12R/IP44**

Finishes		
Anodised Aluminium Silver	AAS	}
Aluminium Brushed	ALB	
Aluminium Polished	ALP	
LED Colour		}
2700°K	27	
3000°K	30	
4200°K	42	
6000°K	60	
Red	R	
Green	G	
Blue	B	
Amber	A	
Optics		
12°	12R	
18°	18R	
30°	30R	
50°	50R	
IP Rating		}
IP20	IP20	
IP44 (AAS only)	IP44	

As this is a 2 LED product, please specify the LED colour and optics required for both LEDs.

Additional Options

Solid Wall Kit (for non cavity walls) **acdc 1701**

Please note that the fittings in this range are available for a minimum order of 50 on extended lead times. Please contact your sales engineer for more details. The installation specifications are available on acdcighting.co.uk

These products are supplied with a six-week lead time as standard.