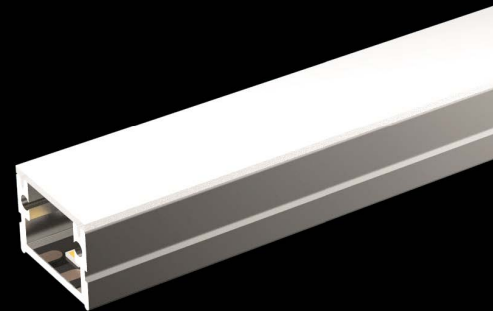


ROMULUS

Profile with IP65 diffusor
Profil avec diffuseur IP65

A39105



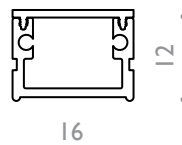
Puissance maxi Power max
30 w/m

Dimensions Dimensions
16 x 12 mm (16 x 14.8 mm with 30° optic)

Longueur maximale Max.length
3000 mm

Fil incandescent Glow wire test
Night&Day 650°C - Opal/Frost/30° 850°C

Température d'utilisation Ambient temp.
- 10°C / + 40°C



A39105.C9.IP65.00.OP.DALI

Type of led

Pure CRI99	A4199	C99
UltraCRI	A4101	CR
Dynamic White	A4102	DW
Regular	A4109	C9
RGB	A4106	RGB
RGBW	A4107	RGBW
RGB2W	A4117	RGB2W
Ultra Efficiency 90	A4190	UE90
Ultra Efficiency 96	A4196	UE96

IP Rating

IP20	IP20
IP54	IP54
IP65H	IP65

Finishes

Aluminium anodised silver	00
Aluminium anodised black	04

Cover & Optic

Opal	PC	OP
Frost	PC	FR
Transparent 30°	PC	T30
Night & Day	PC	N&D

Dimming

No dimming	HF
Dali	DALI
Dmx	DMX
Dimming 0/1-10V	D10



A39105.OP
Optic Opal



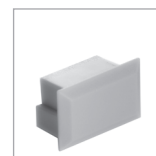
A39105.ND
Optic Night & Day



A39105.T30
Optic Transparent 30°



A39105.ECP30
End cap for 30°



A39105.ECP
End cap



A39105.FR
Optic Frost



A39105.CLI
Clips



A39105.00