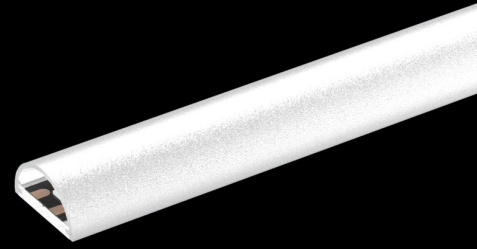


Flexible profile with diffuser for cove lighting  
 Profil flexible avec diffuseur pour gorge lumineuse

A39108

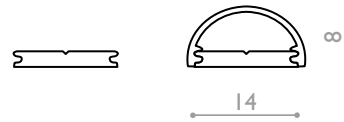


**Puissance maxi Power max**  
20 w/m

**Dimensions Dimensions**  
13.8 x 2 mm (16 x 8 mm with optic)

**Longueur maximale Max.length**  
2000 mm

**Température d'utilisation Ambient temp.**  
-10°C / +40°C



**A39108.C9.IP20.00.OP.DALI**

**Type of led**

Cob 10mm	A4130
CRI99	A4199
UltraCRI	A4101
Dynamic White	A4102
Regular	A4109
RGB	A4106
RGBW	A4107
RGB2W	A4117
CRI99	A4199
High Efficiency 95	A4195
Ultra Efficiency 90	A4190

COB10
C99
CR
DW
C9
RGB
RGBW
RGB2W
C99
HE95
HE90

**IP Rating**

IP20
IP54
IP65H

IP20
IP54
IP65

**Finishes**

Aluminium anodised silver
Aluminium anodised black

00
04

**Cover & Optic**

Opal
------

OP
----

**Dimming**

No dimming
Dali
Dmx
Dimming & to 10Vdc
Phase Dimming Digital

HF
DALI
DMX
D10
PHD



A39108  
Profil le 2m



A39108.OPL  
Optic opal



A39108.ECP  
Endcap



