

URUS

Square profile with IP65 diffusor
Profil carré avec diffuseur IP65

A39170



Puissance maxi Power max
35 w/m

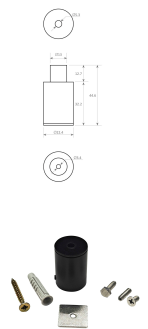
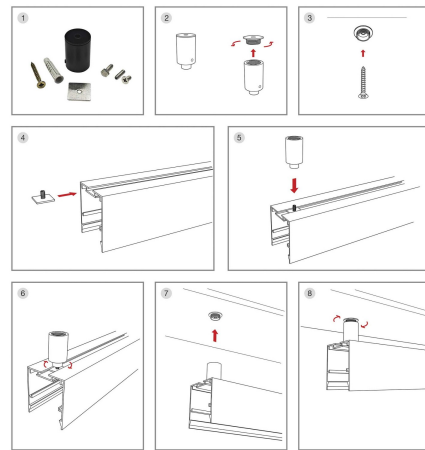
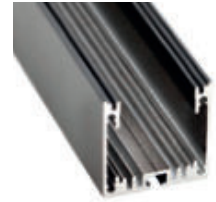
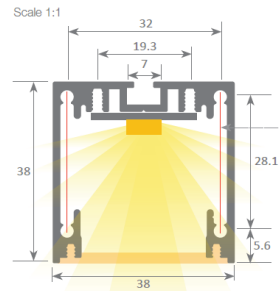
Dimensions Dimensions
38 x 38 mm

Longueur maximale Max.length
3000 mm

Température d'utilisation Ambient temp.
- 20°C / + 40°C

Fil incandescent Glow wire test
Night&Day 650°C - Opal Frost 850°C

Tension d'alimentation Input voltage
5V (pixel) - 12V (pixel) - 24Vdc



A39170.CLP
Kit de fixation en surface

A39170.C9.IP65.00.FR.HF

Type of led

Pure CRI99	A4199	C99
UltraCRI	A4101	CR
Dynamic White	A4102	DW
Regular	A4109	C9
RGB	A4106	RGB
RGB+W	A4107	RGBW
RGB+2W	A4117	RGB2W
High Efficacy	A4111	HE
Ultra Efficacy	A4116	UE
Distance	A4121	D30
Pixelmonochrome	A4119	PXW
Pixel DW	A4122	PXDW
Pixel RGB	A4120	PXRGB
Pixel RGBW	A4124	PXRGBW

IP Rating

IP20	IP20
IP54	IP54
IP65H	IP65

Finishes

Aluminium anodised silver	00
Aluminium painted black	04
Aluminium painted white	06

Cover & Optic

Frost	FR
Microprismatic frost	PRF
Microprismatic transparent	PRT
Night&Day	ND

Dimming

No dimming	HF
Dali	DALI
Dmx	DMX
Dimming 0/1 - 10Vdc	D10
Phase Dimming TRIAC	PHD



A39170.FR frost
A39170.PRF microprismatic frost
A39170.PRT microprismatic transparent



A39170.SUS



A39170.ECA
Endcap



A39170.JCT
Junction plate



A39170.SDF
90° side fixation (x2)