

TITAN

Tiny recessed profile
Profil encastré miniature

A3992



Dimensions Dimensions
12 x 12 mm (recess 8 mm)

Indice de Rendu de Couleur IRC White Color Rendering
A4130 COB UltraCRI not dots 98 (+/-2)

Temperature de couleur White CCT
□ 2400K - 2700K - 3000K - 4000K - 6500K

Couleurs Colors
■ R 625/630 nm ■ G 525/530 nm ■ B 460/465 nm

Precision de couleur Color consistency
SDCM < 3

Puissance lumineuse Luminous output
(@4000K) 840 lm/m (8w)

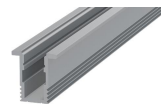
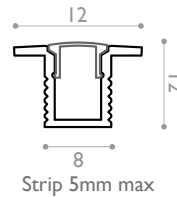
Puissance & nombre de led Power
8 w/m (strip 4mm)

Coupe Cut
50 mm

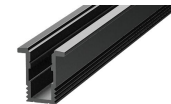
Longueur maximale Max.length
3000 mm

Tension d'alimentation Input voltage
24Vdc

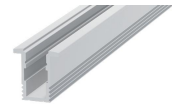
Température d'utilisation Ambient temp.
- 10°C / + 40°C



A3992.00
Silver Grey ano



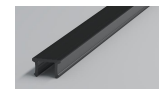
A3992.04
Black anodised



A3992.16
White RAL9016



A3992.FR
Frost cover



A3992.ND
Night&Day cover



A3992.OP
Opal cover



A3992.CLP.00
Endcap grey



A3992.CLP.04
Endcap black



A3992.CLP.16
Endcap white

A3992.COB.IP20.00.OPDALI

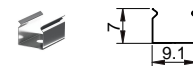
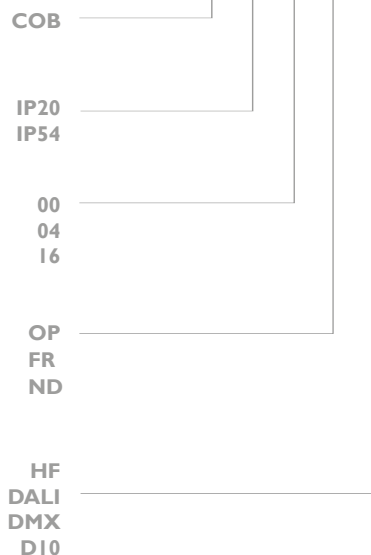
Type of led
UltraCRI COB A4130

IP Rating
IP20
IP54

Finishes
Aluminium anodised silver
Aluminium anodised black
White ral9016 sat

Cover & Optic
Opal
Frost
Night & Day

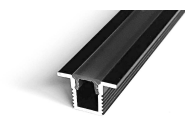
Dimming
No dimming
Dali
Dmx
Dimming I to 10Vdc



A3992.CLI
Clips stainless steel



trip t



1'B8
B][\tr 8Uversion