

NEO 360 D40

Flexible LED Light Tube, 360° output
Tube de lumière LED flexible, sortie à 360°
A4340



Temperature de couleur CCT
2300K | 2700K | 3000K | 4200K | RGB | RGBW

Precision de couleur & IRC Color consistency & CRI
OneBinOnly | >90

Puissance lumineuse & Angle faisceau Luminous output & Beam angle
(@4200K) 2105 lm | (@RGB) 445 lm | (@RGBW-4000K) 895 lm & 360°

Puissance Power
18w/m (W) | 14.4w/m (RGB) | 17.2w/m (RGBW)

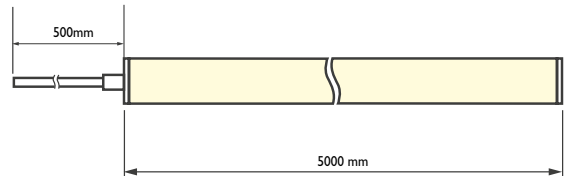
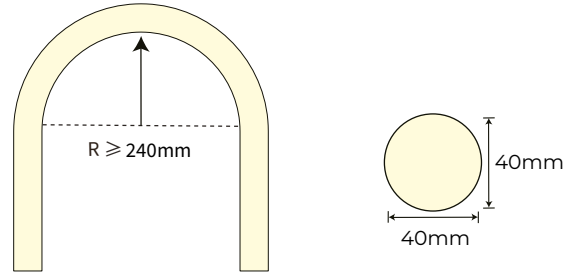
Coupe Cutting Unit
50mm (W & RGB) | 62.5mm (RGBW)

Dimensions & courbure mini Dimensions & min. bending
5000 x D40 mm | R > 240 mm

Indices de protection & normes Standards
IP65 | IK08 | Flame resistant - UV resistant - Solvent resistant - Saltwater resistant

Tension alimentation & Classe isolation Input voltage & Class
24 Vdc | class III

Température d'utilisation Ambient temperature
- 25°C / + 55°C

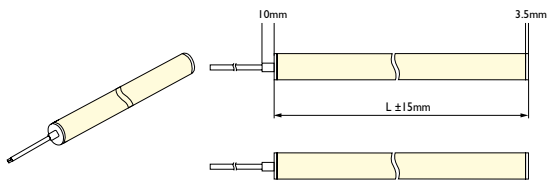


A4340.17.930.IP65.DALI

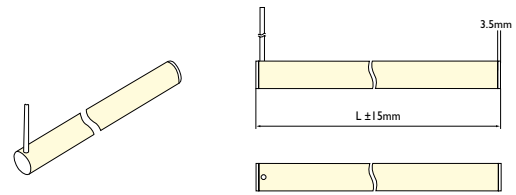
Power		
18w/m	18	
17.2w/m	17	
14.4w/m	14	
CCT & luminous flux		
2300K	1890 lm/m	923
2700K	2050 lm/m	927
3000K	2090 lm/m	930
4200K	2105 lm/m	942
RGB	445 lm/m	RGB
RGBW 2300K	W 775 lm/m	RGBW23
RGBW 2700K	W 895 lm/m	RGBW27
RGBW 3200K	W 930 lm/m	RGBW32
RGBW 4000K	W 895 lm/m	RGBW40
IP Rating		
IP65	IP65	
Dimming		
No dimming	HF	
Dali	DALI	
Dmx	DMX	
Dimming 0/1 - 10VDC	D10	
Casambi	CSB	

Cable Entry / Entrée de cable

IP65 No Dark - Axis outlet



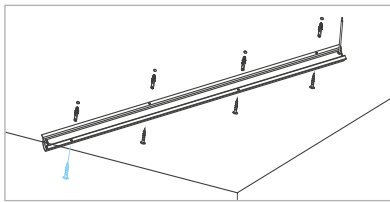
IP65 No Dark - Side outlet



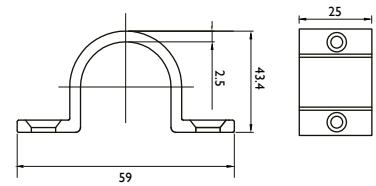
Fixing Accessories / Accessoires Fixation



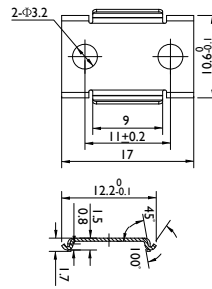
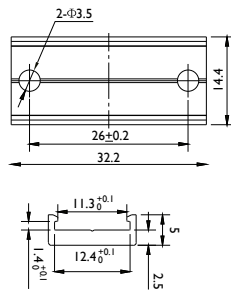
A4340.LCX-1000



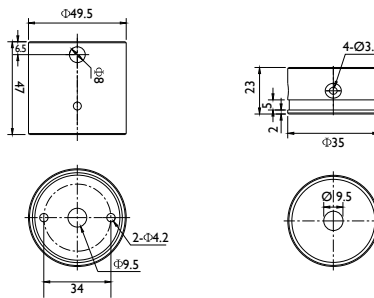
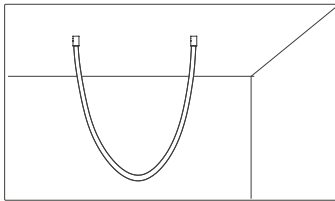
A4340.PI-25



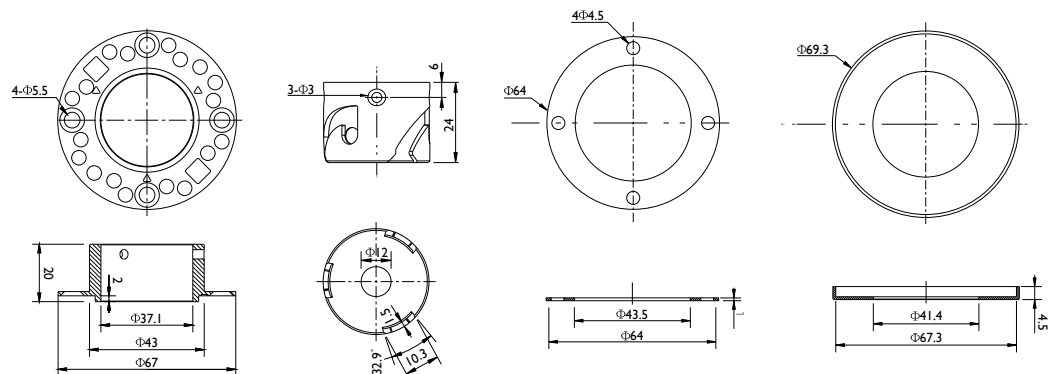
A4330.DCX-00



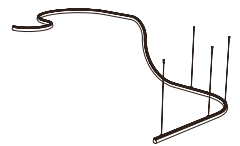
A4340.VCC-00-2



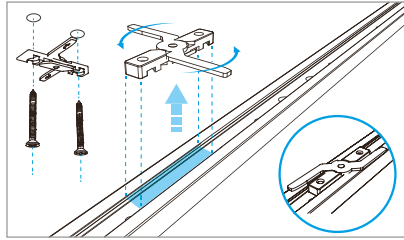
A4340.VRD-00-2



Fixing Accessories / Accessoires Fixation

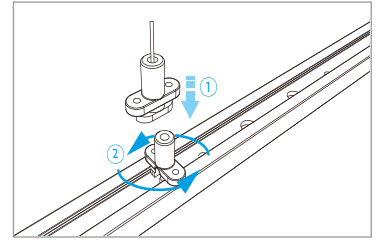


Surface mount / Fixation en saillie



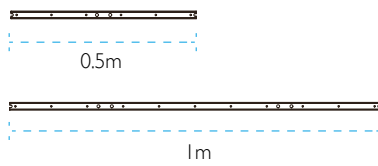
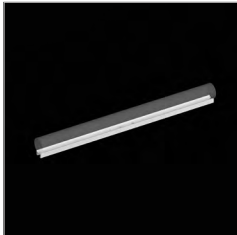
A4340.CL-16

Surface mount / Fixation en saillie



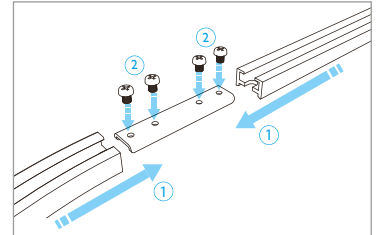
A4340.LHX-S2000

Linear Straight Profile / Profil linéaire droit



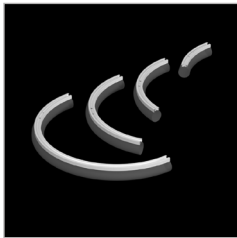
A4340.LHCX-0500
A4340.LHCX-1000

Linear Straight Profile / Profil linéaire droit



A4340.LCX-0070SW

Side Bend Profile / Profil courbure horizontale



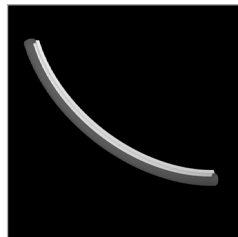
A4340.LH/CX-SddAaa
dd = diameter (cm)
aa = angle (°)

Angle \ Diameter		Angle			
		45°	90°	120°	180°
Diameter	50cm				
	100cm				
	150cm				

Top Bend Profile / Profil courbure verticale



A4340.LH/CX-DddAaa
dd = diameter (cm)
aa = angle (°)



A4340.LH/CX-TddAaa
dd = diameter (cm)
aa = angle (°)

Angle \ Diameter		Angle	
		Upward / Vers le Haut	Downward / Vers le Bas
Diameter	50cm		
	100cm		