

Storm Static White
Storm RGBW Combined Source



INSTALLATION GUIDE

Important Note:

This installation guide is intended for reference purposes only. All installations should comply with local laws, regulations, and site-specific conditions. The recommendations provided are general guidelines and may require adjustments based on the actual site situation. Always consult a qualified professional for final installation decisions.

INSTALLATION INSTRUCTIONS

STORM



WARNING:

- This product must be installed according to national and local electrical codes by a qualified individual familiar with DC systems, the product's operation, and associated risks.
- Failure to follow the installation instructions may result in serious injury or death.
- Disconnect power before installation or maintenance to avoid electrical shock.
- Ensure the fixture is connected to the correct DC voltage and polarity as specified in the product documentation. Do not exceed the rated voltage.
- Do not install if the fixture, parts, or connectors are damaged.
- The fixture is rated IP66 and suitable for outdoor, wet locations.
- Do not submerge the fixture in water or other liquids.
- Avoid direct exposure to concentrated light from the pixel bar as it is designed for visual impact.
- Do not exceed the maximum number of fixtures in any single run. Refer to Table 1 for wiring limitations and power configurations.

CAUTION: Unauthorized modifications or repairs will void the warranty.

MAXIMUM LOAD CAPACITY PER RUN (Table 1)			
Series	Medusa Static White	Medusa RGBW Combined	
Input Voltage Range	24VDC	24V-48VDC Wide Voltage	
Max Power	6W per Module	8W per Module	
Max. Power Linking 3 Modules (530mm) 6 Modules (1060mm)	6 Sets 3 Sets	24V	48V
		5 Sets	10 Sets
		2 Sets	5 Sets
Max run length is for interlink and leading cables (Fixtures not included)	15 Meters	15 Meters	20 Meters

Remark:

- Please be aware that mounting screws and hex-head bolts are not included with your purchase. Installers will need to supply these items for installation.
- The actual maximum daisy chain limit may vary based on the gauge of the leading cable and the specific installation conditions. The values provided are recommended guidelines and should be considered as such. Please ensure that all installations comply with local electrical codes and safety standards.

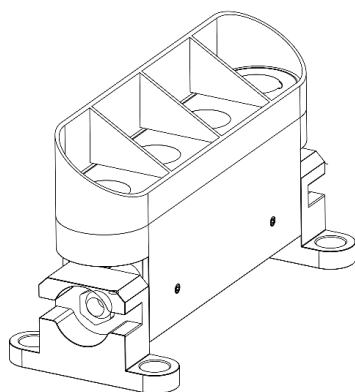
INSTALLATION INSTRUCTIONS

STORM

HARDWARE INSTALLATION STEPS

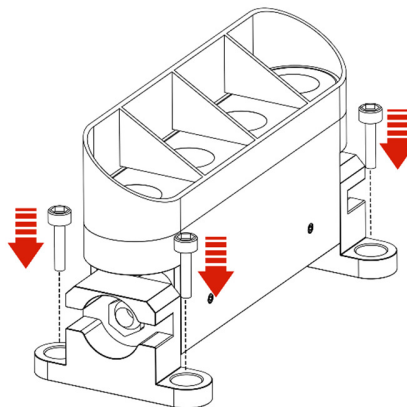
STEP 1) Position the Fixture:

Place the fixture in the desired location.



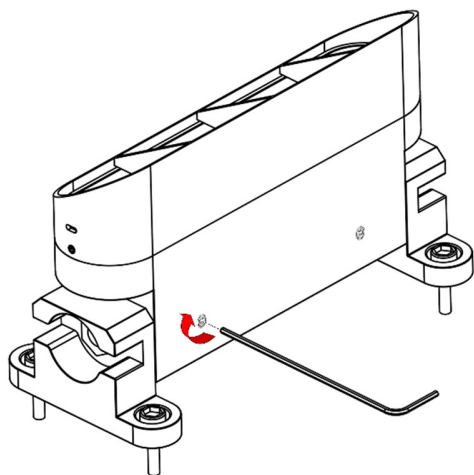
STEP 2) Secure the Fixture:

Ensure the fixture is securely fixed by fastening the screws through the screw holes on the flange located on the side.



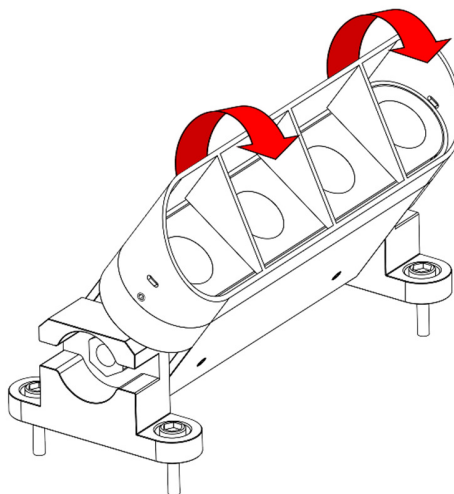
STEP 3) Loosen Hex Bolts:

Unscrew the hex bolts located at the back of the luminaire.



STEP 4) Angle Adjustment and Tightening:

Adjust the luminaire to the desired angle and retighten the bolts securely once aligned.



INSTALLATION INSTRUCTIONS

STORM

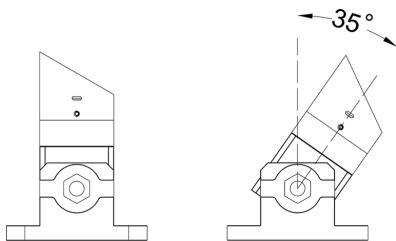


WARNING (Static White):

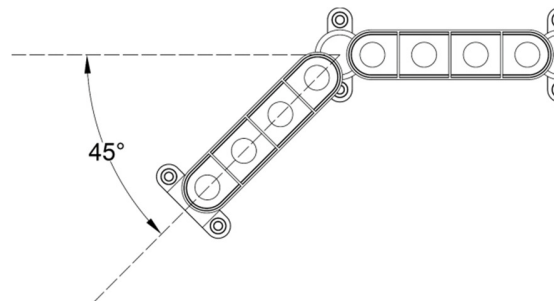
- Ensure the Storm is properly grounded, and the DC power supply includes overcurrent protection (e.g., a fuse or circuit breaker) and a disconnect device for servicing or when not in use.
- Confirm all wiring adheres to the recommended standards to prevent communication issues or damage.
- Disconnect the DC power supply entirely before performing any maintenance or troubleshooting.
- Verify that the voltage and polarity match the product label and power supply specifications before powering on the fixture.
- Ensure the power supply connections are securely fastened and meet all recommended wiring guidelines.
- Confirm all connections are properly insulated to avoid accidental short circuits or electrical hazards.

Bending Strengths:

Top Bend



Side Bend



Wire Identification Schemes Table:

Cable	Function	Core	Wire Size
Lead In and Interlink Cable	DC+	Red	1.0mm ²
	DC-	Black	1.0mm ²

INSTALLATION INSTRUCTIONS

STORM



WARNING (RGBW):

- Ensure the DC RGBW Pixel Bar is properly grounded, and the DC power supply includes overcurrent protection (e.g., a fuse or circuit breaker) and a disconnect device for servicing or when not in use.
- Before connecting DMX cables, confirm all wiring adheres to DMX standards to prevent communication issues or damage.
- Disconnect the DC power supply and DMX signal entirely before performing any maintenance or troubleshooting.
- Verify that the voltage, polarity, and DMX settings match the product label and power supply specifications before powering on the fixture.
- Ensure the DMX address and control settings are correctly configured to prevent unintended lighting behavior. - For DMX networks, use proper termination (DMX Terminator) to avoid signal interference or reflections. (modify above for DC On off wiring)

Wire Identification Schemes Table:

Cable	Function	Core	Wire Size
Power and Data Power Lead in and Interlink Cable	DC+	Red	1.0mm ²
	DC-	Blue	1.0mm ²
	DMX+	Yellow	0.5mm ²
	DMX-	Blue	0.5mm ²
	DMX GND	Green	0.5mm ²